

**Models:**

- SPCIII-1500-24
- SPCIII-3000-24
- SPCIII-5000-48



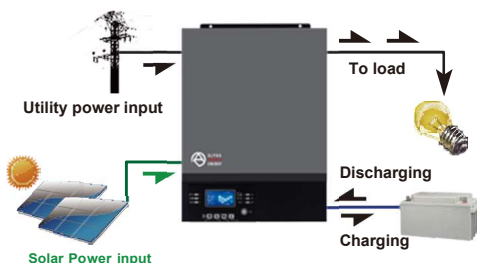
# SPC III Solar Off Grid-Hybrid Inverters

**Features**

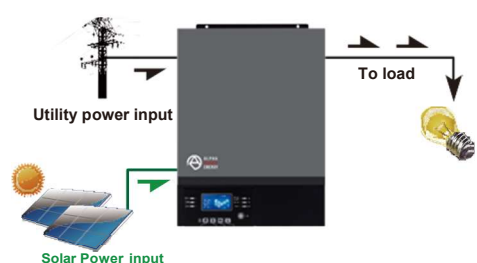
- Output Power Factor 1
- 1500, 3000 and 5000 Watts
- Built-in MPPT Charge Controller
- PV Array Open Circuit Voltage up to 500V<sub>DC</sub>
- Up to 5000W PV Array Power
- Detachable LCD module usable as remotely wired control panel (up to 20 m)
- Integrated Bluetooth for mobile monitoring (Android)
- Reserved communication port for BMS (RS485, CAN-BUS or RS232)
- Lithium-ion battery compatibility
- 1PH, no parallel connection
- Replaceable fan design for ease of maintenance
- Battery Independency: Supply load from Grid or PV, even without battery
- Configurable AC/PV output usage timer and prioritization
- Selectable high power charging current
- Selectable input voltage range for home appliances and personal computers
- Compatible to Utility Mains or generator input
- Auto restart while AC is recovering
- Cold start function when grid is not available
- GPRS module (box version), WIFI box and WIFI stick available or remote monitoring



With battery connected



Without battery connected





MODEL	SPCIII-1500-24	SPCIII-3000-24	SPCIII-5000-48
Rated Power	1500VA/1500W	3000VA/3000W	5000VA/5000W
<b>INPUT</b>			
Voltage	230V <sub>AC</sub>		
Voltage Range	90-280 V <sub>AC</sub>		
Frequency Range	50 Hz/60 Hz (Auto sensing)		
<b>OUTPUT</b>			
AC Voltage Regulation (Batt. Mode)	230V <sub>AC</sub> ± 5%		
Surge Power (5")	3000VA	6000VA	10000VA
Efficiency (Peak)	93%		
Transfer Time (typ)	10 ms (UPS): 20ms (Appliances)		
Waveform	Pure Sine Wave		
No Load Power Consumption	<35W		< 50W
DC Voltage (Optional)	12 V <sub>DC</sub> ± 5%, 100W		
<b>BATTERY</b>			
Battery Voltage	24 V <sub>DC</sub>		48 V <sub>DC</sub>
Cold Start Voltage	23 V <sub>DC</sub>		46 V <sub>DC</sub>
High DC Cut-off Voltage	33 V <sub>DC</sub>		63 V <sub>DC</sub>
<b>SOLAR CHARGER &amp; AC CHARGER</b>			
Solar Charger Type		MPPT	
Maximum PV Array Power	2000 W <sub>P</sub>	4000 W <sub>P</sub>	5000 W <sub>P</sub>
MPPT Voltage Range	120 ~ 380 V <sub>DC</sub>		120 ~ 450 V <sub>DC</sub>
PV <sub>OC</sub> Start-up Voltage		150 +/-10V <sub>DC</sub>	
Maximum PV Array Open Circuit Voltage	400 V <sub>DC</sub>		500 V <sub>DC</sub>
Maximum Solar Charge Current	60 A <sub>DC</sub>		80 A <sub>DC</sub>
Maximum AC Charge Current	40 A <sub>DC</sub>		60 A <sub>DC</sub>
Maximum Charge Current	60 A <sub>DC</sub>		80 A <sub>DC</sub>
Maximum Short Circuit Current		18A <sub>DC</sub>	
<b>PHYSICAL</b>			
Dimension, D x W x H (mm)	100 x 280 x 390		115 x 300 x 400
Net Weight (kg)	8.5	9	10
Communication Interfaces	USB, RS232, RS485, Bluetooth, Dry Contact. Optional: GPRS, WIFI, SNMP		
<b>ENVIRONMENT</b>			
Humidity	5 to 95% Relative Humidity (Non-condensing)		
Operating Temperature	-10 to 50°C		
Storage Temperature	-15 to 60°		

All information contained in this document is subject to change without notice.



#### Worldwide Corporate Offices

##### Headquarter Germany

Hansastraße 8  
D-91126 Schwabach  
Tel: +49 9122 79889 0  
Fax: +49 9122 79889 21  
Mail: info@alpha-outback-energy.com

##### Eastern Europe

ee@alpha-outback-energy.com

##### Middle East

me@alpha-outback-energy.com

##### France and Benelux

fbnl@alpha-outback-energy.com

##### Spain

spain@alpha-outback-energy.com

##### Russia

russia@alpha-outback-energy.com

##### Africa

africa@alpha-outback-energy.com