



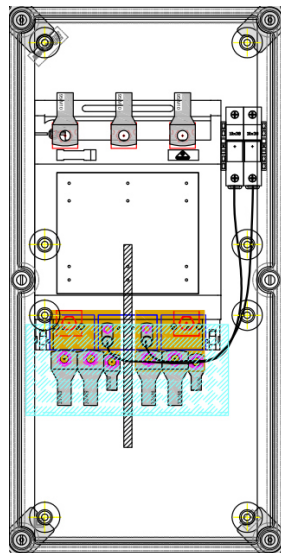
enwitec BAT FUSE B-01

Fuse protection for battery systems

e.g. compatible to SMA Sunny Island battery inverters

- Type of fuses: NH01 (2 pcs., overcurrent and short circuit protection in „+“ and „-“)
- Permissible fuse insert: 80A...250A (not scope of delivery, order option)
- Fuseholder: Fuse-switch-disconnector

Item-No.	10011713		
Type	enwitec BAT FUSE B-01		
Electrical data		Connection voltage tap	
Rated voltage	12/24/48 V	Number of voltage tap connection	1
Rated current depending on fuse insert	80/100/160/200/250 A	Capsule fuse	10x38 2 x 8 A
Rated voltage of voltage tap	12/24/48 V	Max. wire cross section / outer \varnothing of cables	6mm ² / 9...16mm ²
Rated current of voltage tap	8 A		
Connexion battery		Mechanical dimensions	
Number of battery string connection	2	Width x height x depth	approx. 270x540x171(mm)
Cable lug / max. width of cable lug	M8 / 25mm	Weight	approx. 7kg
Max. wire cross section / outer \varnothing of cables	4 x 95mm ² / 4 x 14...21mm	Enviromental conditions	
Connection e.g. Sunny Island Charger		Temperature range	-20°C...+60°C
Number of charger connection	2	Relative humidity	100% (non-condensing)
Cable lug	M8	Enclosure	
Max. width of cable lug	16mm	Protection rating (EN 60529)	IP65
Max. wire cross section / outer \varnothing of cables	4 x 16mm ² / 4 x 9...16mm	Mounting	wall mounting transparent cover with screws
Connection e.g. Sunny Island			
Number of Sunny Island connection	1		
Cable lug / max. width of cable lug	M10 / 25mm		
Max. wire cross section / outer \varnothing of cables	2 x 95mm ² / 2 x 14...21mm		



enwitec electronic GmbH & Co.KG

Scherrwies 2
84329 Rogglfing
Germany

Telephone +49 8725 9664-0
Telefax +49 8725 9664-96
info@enwitec.eu
www.enwitec.eu



engineering with innovations

June 2016. Subject to change without notice; Pictures might be different to the original;
Errors expected ! ©enwitec electronic GmbH & Co.KG



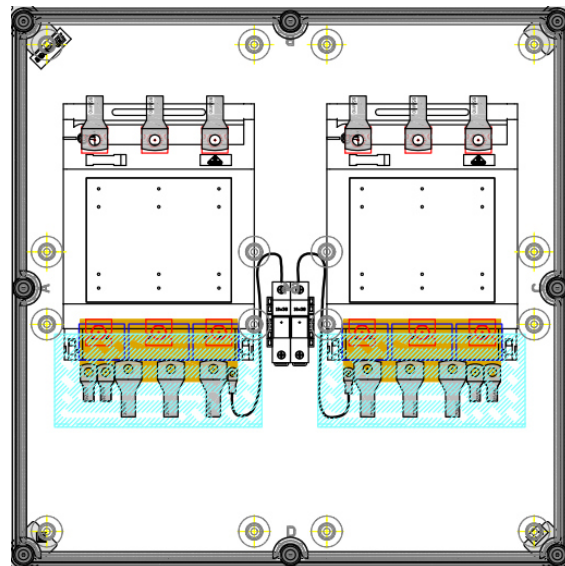
enwitec BAT FUSE B-03

Fuse protection for battery systems

e.g. compatible to SMA Sunny Island battery inverters

- Type of fuses: NH01 (6 pcs., overcurrent and short circuit protection in „+“ and „-“)
- Permissible fuse insert: 80A...250A (not scope of delivery, order option)
- Fuseholder: Fuse-switch-disconnector

Item-No.	10011714		
Type	enwitec BAT FUSE B-03		
Electrical data		Connection voltage tap	
Rated voltage	12/24/48 V	Number of voltage tap connection	1
Rated current depending on fuse insert	80/100/160/200/250 A	Capsule fuse	10x38 2 x 8 A
Rated voltage of voltage tap	12/24/48 V	Max. wire cross section / outer \varnothing of cables	6mm ² / 9...16mm ²
Rated current of voltage tap	8 A	Mechanical dimensions	
Connexion battery		Width x height x depth	approx. 540x540x171(mm)
Number of battery string connection	3	Weight	approx. 16kg
Cable lug / max. width of cable lug	M8 / 25mm	Enviromental conditions	
Max. wire cross section / outer \varnothing of cables	6 x 95mm ² / 6 x 14...21mm	Temperature range	-20°C...+60°C
Connection e.g. Sunny Island Charger		Relative humidity	100% (non-condensing)
Number of charger connection	4	Enclosure	
Cable lug	M8	Protection rating (EN 60529)	IP65
Max. width of cable lug	16mm	Mounting	wall mounting
Max. wire cross section / outer \varnothing of cables	8 x 16mm ² / 8 x 9...16mm	transparent cover with screws	
Connection e.g. Sunny Island			
Number of Sunny Island connection	3		
Cable lug / max. width of cable lug	M10 / 25mm		
Max. wire cross section / outer \varnothing of cables	6 x 95mm ² / 6 x 14...21mm		



enwitec electronic GmbH & Co.KG

Scherrwies 2
84329 Rogglfing
Germany

Telephone +49 8725 9664-0
Telefax +49 8725 9664-96
info@enwitec.eu
www.enwitec.eu



engineering with innovations

June 2016. Subject to change without notice; Pictures might be different to the original;
Errors expected ! ©enwitec electronic GmbH & Co.KG